

4 March 2019

Network Rail Infrastructure Limited  
1 Eversholt Street  
London  
NW1 2DN

Rail for London (Infrastructure) Limited  
55 Broadway  
London  
SW1H 0BD

**A connection contract at Westbourne Park between Network Rail Infrastructure Limited (Network Rail) and Rail for London (Infrastructure) Limited (RfL(I))**

Pursuant to section 18 of the Railways Act 1993, I approve the terms of the proposed access contract (being a track connection contract) submitted to the Office of Rail and Road (ORR) on 10 December 2018, relating to the connection at Westbourne Park, subject to the modifications specified in the Schedule to these directions.

I further hereby direct you, Network Rail and RfL(I), in your respective capacities as facility owner, to enter into the proposed access contract with the other of you, in the capacity of beneficiary, on the terms agreed no later than 8 April 2019.

You shall be released from the duty to enter into the contract in question if:

1. either of you, in the capacity of facility owner, gives ORR notice of an objection pursuant to section 18(7)(c)(i) of the Railways Act 1993 before the expiration of a period fourteen days beginning with the day after the day on which these directions are issued; or
2. either of you, in the capacity of beneficiary, fails to enter into the proposed access contract by the date which is no later than 8 April 2019.



**GORDON HERBERT**

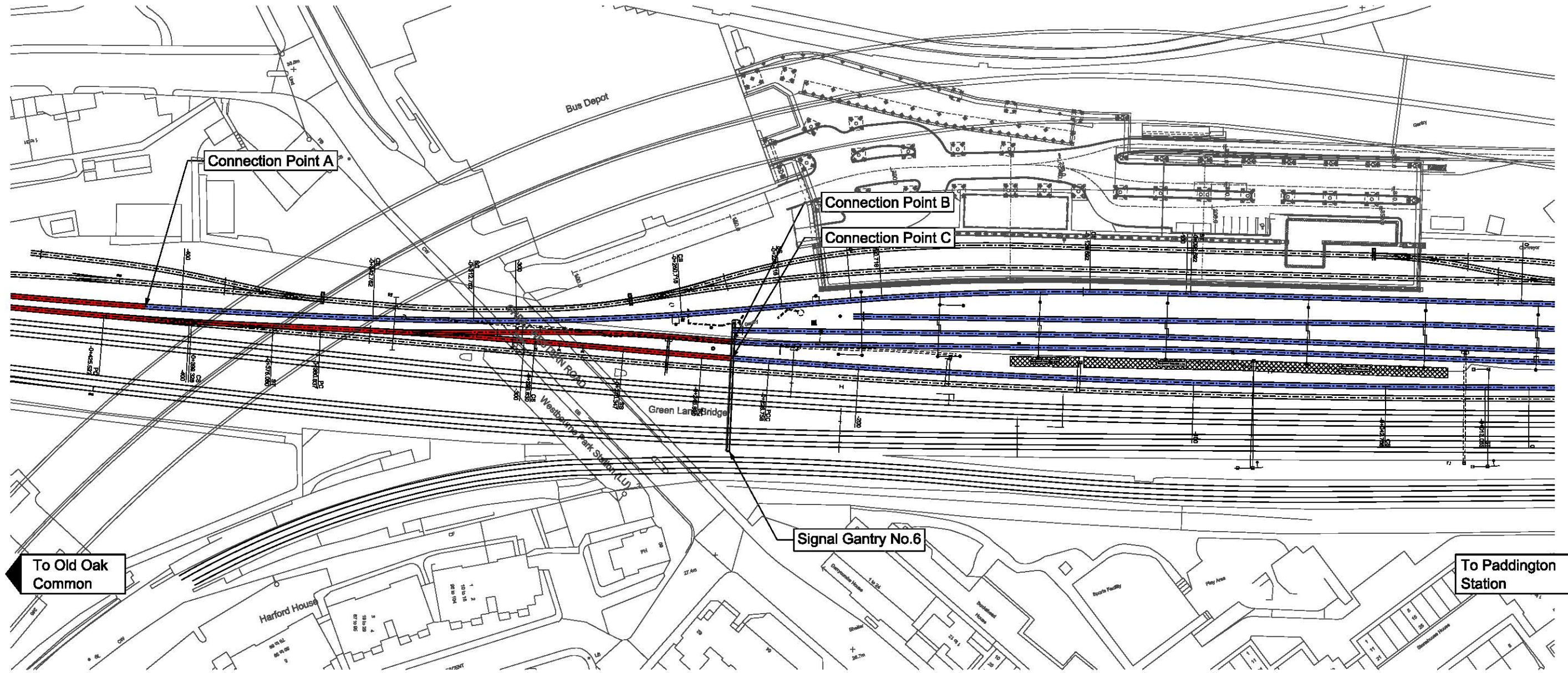
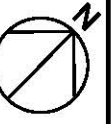
**Duly authorised by the Office of Rail and Road**



## **SCHEDULE**

### **Modifications relating to the proposed connection contract between Network Rail and RfL(I) at Westbourne Park submitted to ORR under clause 18(5) of the Railways Act 1993**

1. The update of plan CRL1-XRL-R4-DDA-CR076-00002-A3 in Schedule 4 to include updated grid references.
2. The inclusion of plan CRL1-XRL-R4-DDA-CR076-00003-A3 in Schedule 4.



Connection Point Location	OS Grid		London Survey Grid		CRL Chainage	NRIL Chainage
	Eastings	Northings	Eastings	Northings		
A	524674.867	181923.0149	75166.5277	36729.5157	-414.5m	1m20.75c
B	524839.017	181861.3349	75329.1236	36663.7052	-238m	1m12c
C	524837.328	181856.6964	75327.3179	36659.1093	-238m	1m12c

**Key:**

- RfL COS Network
- NRIL Network



© Crown copyright and database rights 2017 Ordnance Survey 100035971

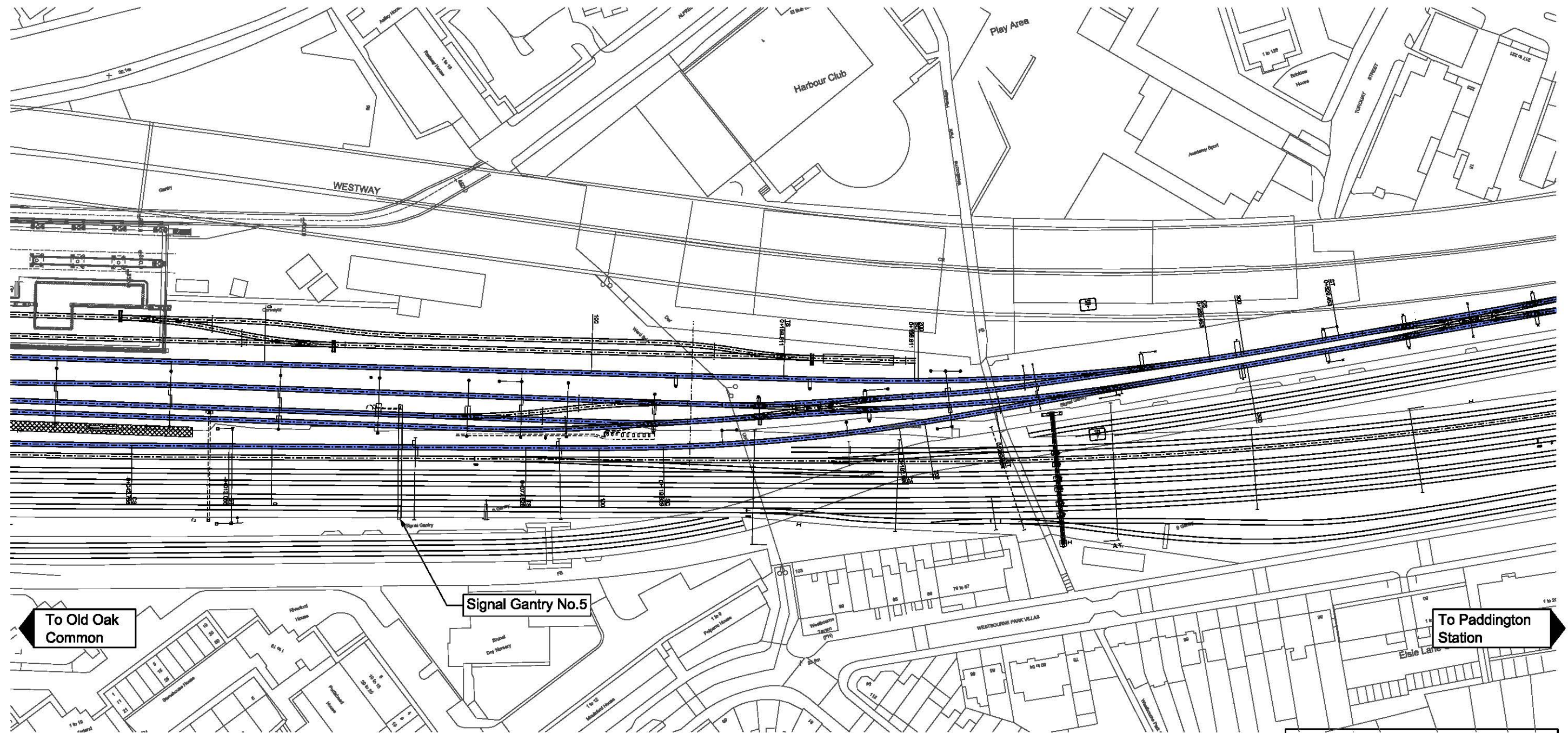
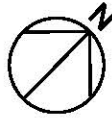
Rev.	Date	Description	By	Chkd	App	Auth
P01.1	24/01/2018	First Issue	GB	-	-	-

Notes:

 **Crossrail Limited**  
 25 Canada Square  
 Canary Wharf  
 London  
 E14 5LQ  
 www.crossrail.co.uk

Contract: Crossrail Line 1 Programme		By: G.BEZUIDENHOUT	
Originator: Crossrail Ltd		Chk: ---	
Location: Kensal Town to Paddington		App: ---	
Title: Westbourne Park Connecting Infrastructure		Auth: ---	
Scale: 1:1250 @ A3	Drg No: CRL1-XRL-R4-DDA-CR076-00002	Rev: P01.1	Suit: S0

PDF Check Plot  
RESTRICTED



**Key:**

- RfL COS Network
- NRIL Network



© Crown copyright and database rights 2017 Ordnance Survey 100035971

Rev.	Date	Description	By	Chkd	App	Auth
P01.1	19/04/2018	First Issue	GB	-	-	-

Notes:

 **Crossrail Limited**  
 25 Canada Square  
 Canary Wharf  
 London  
 E14 5LQ  
 www.crossrail.co.uk

Contract: Crossrail Line 1 Programme  
 Originator: Crossrail Ltd  
 Location: Kensal Town to Paddington  
 Title: Westbourne Park Connecting Infrastructure

Scale: 1:1250 @ A3      Drg No: CRL1-XRL-R4-DDA-CR076-00003      Rev: P01.1      Suit: S0

By: G.BEZUIDENHOUT  
 Chk: ---  
 App: ---  
 Auth: ---

PDF Check Plot  
RESTRICTED